



# Hidroplús®

## UNION SLEEVE FOR INJECTION



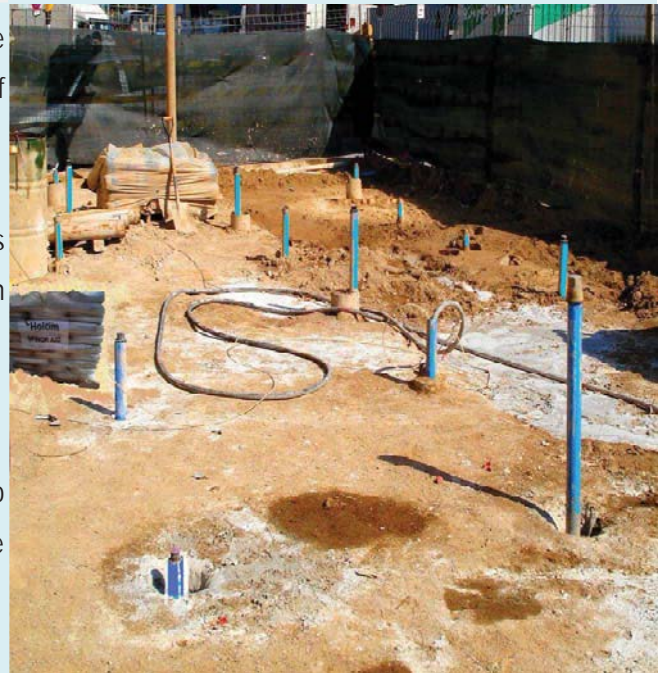
Hidroplus tube for injection of cement grout mixtures, microcement.

Made of PVC and fitted with rubber valves, the Hidroplus tube injection is well suited for full, repetitive and selective injections.

Injections for consolidation of the soils, ground treatments for the realization of underground works. Consolidation of the front of tunnel construction (under umbrella).

En estas y otras aplicaciones el tubo de inyección Hidroplús permite la utilización de diferentes mezclas y microcementos en inyecciones repetitivas selectivas.

The four holes of 10 mm per valve, favour the equitable spreading of the mixture into the surrounding soil. The great strength and also flexibility of the rubber sleeve valve, guarantee the repetitions of the injection with no return of the mixture.



The union is made without additional couplings, screwing tube with tube (trapezoidal screw with male-female ends).

The union is smooth on the inside and outside, thereby favoring the passage of the obturator, without obstacles and freely throughout the inside of the tube.

## CHARACTERISTICS VALVES

- Rubber sleeve 80 shore hardness.
- Thickness: 5mm.
- Length: 70mm.
- PVC fastening rings 19mm.
- Machining: 4 holes of 10mm at 90°.
- Valve steps: 0.33 – 0.5 – 1 Mts.



## PIPES

Outer Diameter (mm)	Inner Diameter (mm)	Thickness (mm)	Burst Pressure (Kg/cm <sup>2</sup> )	Outer Sleeve (mm)
40	32	4	30	50
60	45	7.5	50	70
63	53	5	30	73
90	76	6.5	30	100



## TABLE OF TECHNICAL CHARACTERISTICS

Characteristics	Uni.	UNE 53112	CEN 155 WI O19
Density	Kg/m <sup>3</sup>	1350 to 1460	1350 to 1460
VICAT Softening Temperature	°C	>79	>80
Water Absorption	gr/m <sup>2</sup>	50	-
Performance in the Heat	%	>5	>5
Resistance to Impact (% fallos)	%	<5	>5
Resistance to Mpa Traction	>49	-	-
Ductile Yield	%	>80	-
Short-term Elastic Modulus Mpa	3.000	-	-

